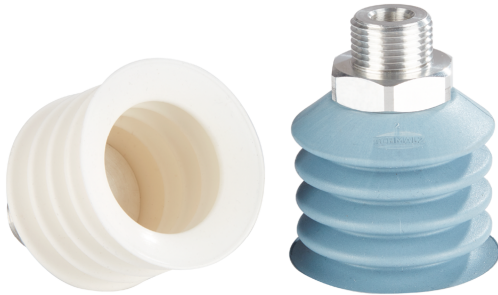
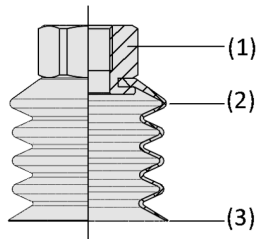


## Bellows Suction Cups FSDC

Suction area (Ø) 40 mm



Bellows Suction Cups FSDC



System design Bellows Suction Cups FSDC



Bellows suction cups FSDC when handling baked goods

### Suitability for industry specific applications

#### Application

- Food compliant suction cup for industrial use in plants for handling bread and bakery products
- Handling of dough pieces in automated production
- Use in the handling of frozen bakery products

#### Design

- Suction cup connection nipple made of FDA compliant aluminium (1)
- Bellows suction cups with 4.5 folds (2) made of wear resistant SI-HD (FDA compliant) or metal detectable SI-MD (FDA compliant)
- Flexible sealing lip (3) in conjunction with optimized bellows structure

#### Product highlights

- Reduced machine maintenance times due to wear resistant and FDA compliant material SI-HD
- Reliable handling of food products by using the special material SI-MD, detectable by commercially available metal detectors
- Very good adaptation to uneven workpiece contours due to flexible sealing lip

# Bellows Suction Cups FSDC

Suction area (Ø) 40 mm

## Designation code Bellows Suction Cups FSDC

FSDC	-	40	-	SI-HD-65	-	G1/4-IG
1		2		3		4

### 1 – Abbreviated designation

Code	Version
FSDC	4.5 folds

### 2 – Suction area

Code	Diameter in mm
40	ø 40

### 3 – Material

Code	Material
SI-HD-65	Silicone
SI-MD-55	Silicone

### 4 – Connection

Code	Connection
G1/4-IG	G1/4-IG (IG = female (F))
G3/8-AG	G3/8-AG (AG = male (M))

Bellows suction cup FSDC (suction cup + connection nipple) is delivered unassembled. The product consists of:

- Suction cup of type FSDC - elastomer part, available in different diameters and materials
- Connection nipple of type SA-NIP - available with different threads

## Ordering data Bellows Suction Cups FSDC

Type			Suction cup material with ShA: *	
			SI-HD-65	SI-MD-55
FSDC	40	G1/4"-F	10.01.06.05237	10.01.06.05239
FSDC	40	G3/8"-M	10.01.06.05238	10.01.06.05240

\*Additional material specifications at beginning of the section "Vacuum Suction Cups"

## Ordering data Spare parts Bellows Suction Cups FSDC

Type			Suction cup material with ShA: *	
			SI-HD-65	SI-MD-55
FSDC	40	N059	10.01.06.04598	10.01.06.05187

\*Additional material specifications at beginning of the section "Vacuum Suction Cups"

Type			Spare parts		Part no.
FSDC	40	G1/4"-F	Suction cup connection nipple	SA-NIP N059 G3/8-AG	10.01.06.05231
FSDC	40	G3/8"-M	Suction cup connection nipple	SA-NIP N059 G3/8-AG	10.01.06.05231

## Technical data Bellows Suction Cups FSDC

Type			Suction force (-600 mbar) [N]*	Pull-off force [N]	Material hardness [Shore A]	Volume [cm <sup>3</sup> ]	Hose inner diameter (recom.) d [mm]**
FSDC	40	SI-HD-65	35.9	39	65	30.6	12.0
FSDC	40	SI-MD-55	35.9	39	55	30.6	12.0

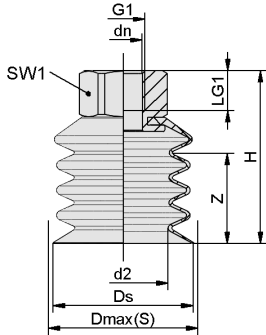
\*The specified suction forces are theoretical values at a vacuum of -0.6 bar and with a smooth, dry workpiece surface - they do not include a safety factor

\*\*The recommended hose diameter is based on a hose length of approx. 2 m

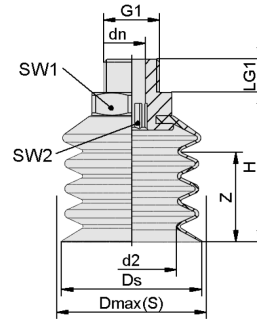
# Bellows Suction Cups FSDC

Suction area ( $\varnothing$ ) 40 mm

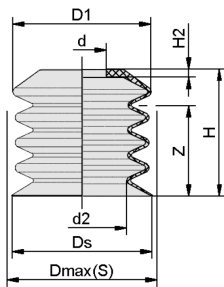
Design data Bellows Suction Cups FSDC



FSDC 40 G1/4-IG



FSDC 40 G3/8-AG



FSDC 40

## Bellows Suction Cups FSDC

Suction area (Ø) 40 mm

### Design data Bellows Suction Cups FSDC

Type	d2 [mm]	dn [mm]	Dmax(S) [mm]	Ds [mm]	G1	H [mm]	LG1 [mm]	SW1 [mm]	SW2 [mm]	Z (Stroke) [mm]
FSDC 40 SI- HD-65 G1/4-IG	26.9	11.4	45	42	G1/4"-F	52	12	24	-	27
FSDC 40 SI- HD-65 G3/8-AG	26.9	8.2	45	42	G3/8"-M	45	10	24	8	27
FSDC 40 SI- MD-55 G1/4-IG	26.9	11.4	45	42	G1/4"-F	52	12	24	-	27
FSDC 40 SI- MD-55 G3/8- AG	26.9	8.2	45	42	G3/8"-M	45	10	24	8	27

Type*	d [mm]	d2 [mm]	D1 [mm]	Dmax(S) [mm]**	Ds [mm]	H [mm]	H2 [mm]	Z (Stroke) [mm]
FSDC	40	14.5	27	45.0	42.0	38.0	2.4	27.0

\*Acceptable dimensional tolerances for rubber parts concerning to DIN ISO 3302-1 E3

\*\*External dimension of the suction cup when it is pressed against the workpiece by the vacuum